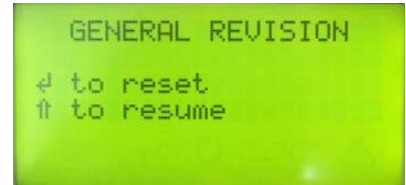


Bravo Display Warning Messages


The sterilizer periodically reminds the user about recommended “routine” maintenance operations that must be carried out in order to ensure the proper operation of the device. The reminder notices are displayed on the screen when a sterilization cycle is started.

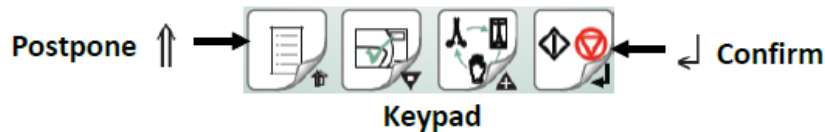
Warning Message	Frequency
Chamber Filter Cleaning	Every 200 cycles
Bacteriological Filter Replacement	Every 400 cycles
Door Gasket Replacement	Every 1000 cycles
General Service	Every 3000 cycles

The reminder notices are displayed on the screen when a sterilization cycle is started:



Push the  key to confirm the recommended “routine” maintenance operation has been performed.

Press the  key to postpone the message. The user is reminded with another message the next time the sterilizer is used.



The frequencies indicated have been calculated for “standard use” of the device, used correctly and positioned in a suitable environment. Should you notice a significant lose in performance, repeated occurrence of alarms or visible degradation of the parts subject to wear, it is advisable to carry out the maintenance operations earlier than the due dates programmed in the system.

Bravo Maintenance

Daily	Clean the door gasket and plate with a clean cotton cloth soaked in a weak solution of water and vinegar. Dry the surfaces and remove any residue before using the device. Clean external surfaces using a clean cotton cloth dampened with water and, if needed a neutral detergent.
Weekly	Clean the sterilization chamber and relative accessories. Disinfect external surfaces.
Monthly	Clean the internal distilled water tank. Safety valve maintenance. Clean (or replace) the drain filter
Annual or every 1000 cycles	Replace the door gasket.
Every 3 years or 3000 cycles	Recommended complete maintenance of the sterilizer by a authorized dealer.

Door Gasket Part #4800050000

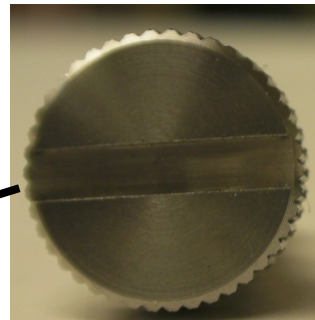


Clean the door gasket and front of chamber with a clean cotton cloth soaked in a weak solution of water and vinegar. Dry the surfaces and remove any residue before using the device.

Install the new door gasket by pressing the gasket into its seat, first on top, then bottom, then both sides. Once seated on 4 sides, continue to press the remaining gasket completely into its seat.

For the occasional disinfection of the external surfaces, you can use either denatured alcohol or detergents with a small percentage of sodium hypochlorite (or equivalent).

Chamber Drain Filter Part #47200030000 Cleaning & Replacing



Unscrew the fitting from the lower front of the chamber. Remove the screen from the fitting.

Note: Grab the screen on the solid end do not grab in the middle of the screen. You will damage the screen.

Clean the inside of the screen. The screen may look clean on the outside but the inside will be dirty and clogged with debris. Gently insert clean screen into chamber fitting and screw fitting in finger tight.

Bacteriological Filter

Part #47200010000

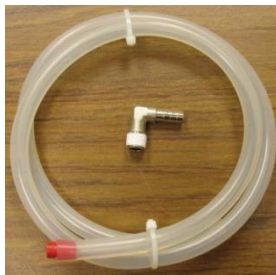
To replace the bacteriological filter unscrew the filter counterclockwise and replace with new filter.



Bacteriological Filter

Cleaning the Internal Distilled Water Tank

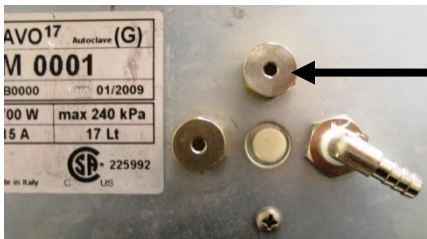
1. Turn the main power switch OFF and unplug the unit.
2. If a Bravo Water Reservoir Drain Kit is installed on the Bravo insert the end of the tube into an empty container and remove the plug from the tube.



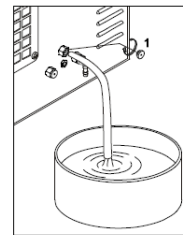
Water Reservoir Drain Kit
#01-112320S

3. If there is no internal drain tank tubing, go to the rear of the Bravo with an empty container and remove the plug to the Distilled Water Drain Port.

Note: As soon as the plug is removed water will come out of the port.



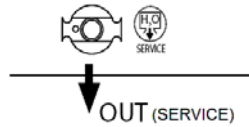
Distilled Water
Drain Port



4. Wait until the internal tank is completely drained and reinstall the plug.
5. Prepare 1 gallon of distilled water mixed with 10% of pure alcohol and fill using the manual filling container. If you have a Bravo 2, remove the reservoir cap and pour the cleaning solution into the top of the Bravo.
6. Fill the internal tank completely with this solution and allow the solution to sit for 30 minutes.
WARNING: DO NOT RUN ANY CYCLE DURING THIS PERIOD.
7. Now drain the internal tank and discard the solution. Close the drain port with a plug.
8. Fill the reservoir with distilled water and run one empty cycle of your choice.

Cleaning the internal tank Bravo 2

1. Arrange an empty container on the floor near the sterilizer and insert the free end of the tube.
2. Insert the other end of tube in the quick-coupling marked "Service" positioned on the front as shown in the figure below.



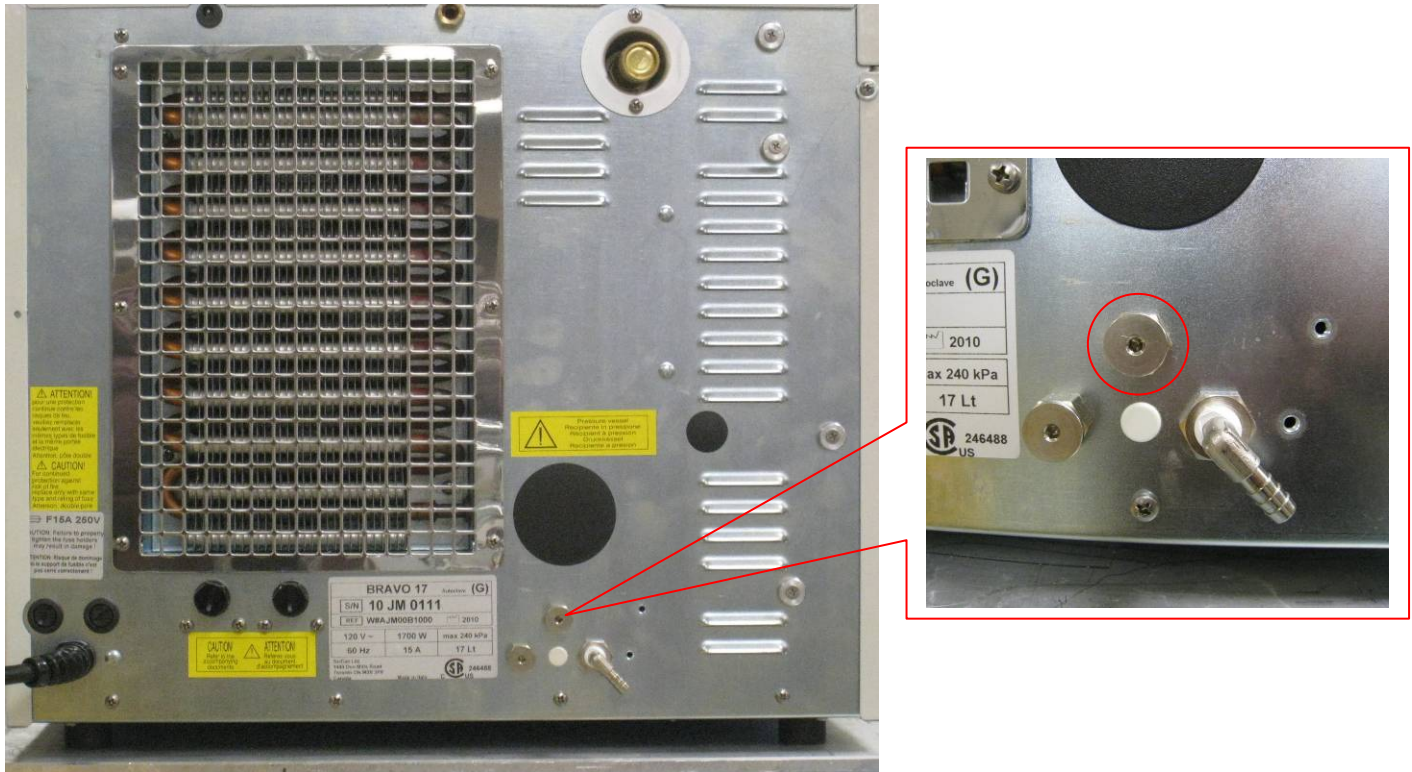
3. Allow the tank to empty completely, and then disconnect the tube.
4. Prepare 4 liters/1.06 US Gal of distilled water and 10 % of pure alcohol, such as isopropyl and then pour it into the distilled water tank following the procedure indicated in the chapter "Loading Distilled Water" until the maximum level has been reached.
5. Let the solution sit for 30 minutes.

WARNING: DO NOT RUN ANY CYCLE DURING THIS PERIOD.

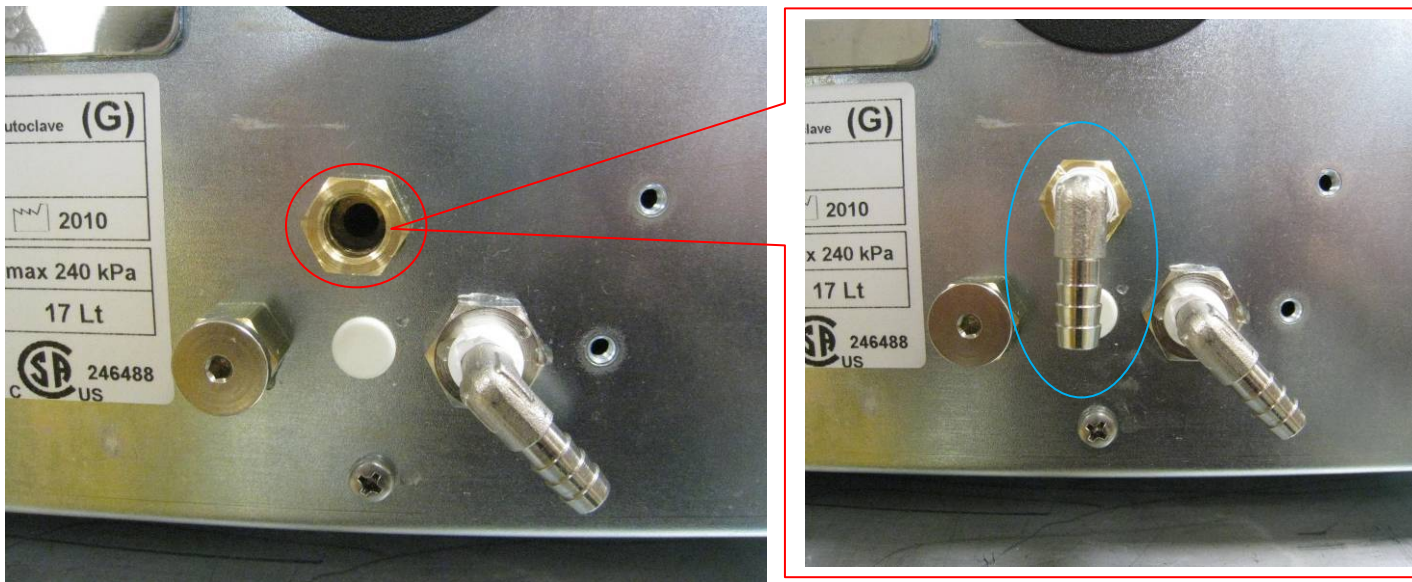
6. Repeat step 2 and **completely** empty the internal tank again (as in point 2).
7. Fill the reservoir with distilled water and run one empty cycle of your choice.

BRAVO unit - Instruction Water Reservoir Drain Kit

1.



2.



3.



4.

