

Bravo Quick Reference Guide

Operator's Manual should be consulted before using this autoclave

1 800 667-7733
1 800 572-1211
+49 (0) 7561 98343-0
+1 416 446-4500



BASIC OPERATION

1

2

3 **Fill – Steam Distilled Water Only** (if required)

Manual E030

Automatic A040

OR

Front Reset System (if required)

Back

4

5

6 **Selecting a cycle**

Starting a cycle

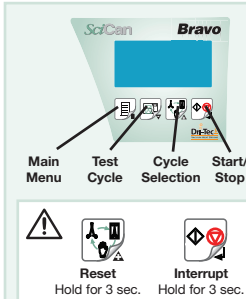
End of cycle

7

8

Manual Drain (if required)

KEYPAD



CYCLE DESCRIPTIONS

Porous or Hollow

– Textiles, Hollow, Lumened, Solid
(Eg.: Smocks, handpieces, scopes, Phaco)

Solid

– Solid, non-lumened instrument
(Eg.: Scissors, mirrors, pliers, scalers, burr block)

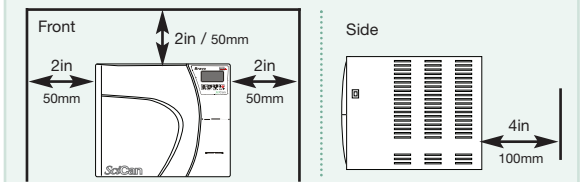
Wrapped:

– Instruments that are wrapped in a cloth or paper wrap or pouched in a paper/paper or paper/plastic pouch. Also used when mixed loads are processed.

Unwrapped:

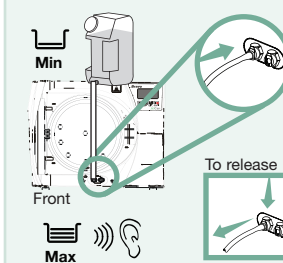
– Instruments that are placed without any type of packaging.

VENTILATION

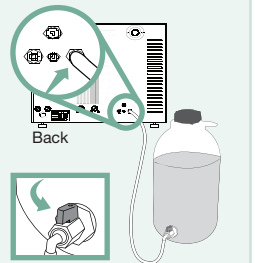


FILLING – Steam Distilled Water Only

Manual Fill (if required)

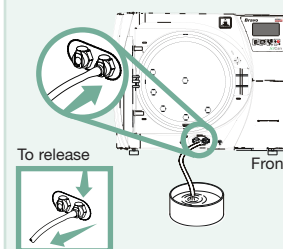


Automatic Fill

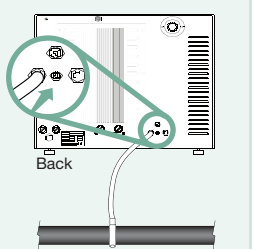


DRAINING

Manual Drain (if required)



Automatic Drain



MAINTENANCE SCHEDULE

To ensure trouble-free performance, operators must follow this preventative maintenance schedule.

DAILY	WEEKLY	EVERY YEAR	SPARE PARTS / ACCESSORIES
Door Gasket <ul style="list-style-type: none"> It is recommended to check the door gasket for wear and replace if required. Clean the door seal with a wet cloth. 	Sterilization Chamber <ul style="list-style-type: none"> Clean the chamber and appropriate accessories with a wet cloth. If required, use a neutral detergent (a mild detergent containing no alkalis or bleaches). Carefully rinse with distilled water and remove any residue. Clean chamber drain filter 	Door Seal <ul style="list-style-type: none"> Replace every 1000 cycles or 12 months (whichever is first). 	<ul style="list-style-type: none"> Door Gasket 48000050000 Biological Filter 47200010000 Chamber Drain Filter 47200030000
Waste Bottle <ul style="list-style-type: none"> Completely empty the waste tank every time you refill the water reservoir. 			<ul style="list-style-type: none"> Thermal Paper STXX0250000
Data Logger <ul style="list-style-type: none"> If using a data logger, transfer the data on the USB drive to your computer. 			<ul style="list-style-type: none"> Chamber Rack 17/17V C1BP583000Y Chamber Rack 21V C1BG534000Y Tray, 17/17V C1XP076000Y Tray 21V C1BG345000Y
Chamber Drain Filter <ul style="list-style-type: none"> Inspect, clean or replace the drain filter. 	MONTHLY <ul style="list-style-type: none"> Test the safety valve located on the back of the unit. 	GENERAL <ul style="list-style-type: none"> Prior to installation, for 220V rated nits, ensure input voltage is greater than 215V 	<ul style="list-style-type: none"> Tray Extractor STXX0080000 Pouch Rack C1BP553000Y Water Filling Jug A0XP0010000 Water In-Take Pull Kit 01-111774S Direct-to-Drian Kit 01-111775S Data Logger (G) 01-111729 Data Logger (T) 01-111730
EVERY 3 – 6 MONTHS <ul style="list-style-type: none"> Biological Filter <ul style="list-style-type: none"> Inspect and replace the filter, if required. 		Printer Paper <ul style="list-style-type: none"> If printer paper is not printing properly, remove paper tighten the paper around the roll and retry. 	

Best Practices: SciCan recommends the final user carefully choose the most appropriate sterilization cycle according to the recommendations of their leading infection control authorities and local regulatory guidelines / recommendations.



Your Infection Control Specialist™

Bravo, Dri-Tec® logo and Your Infection Control Specialist are trademarks of SciCan Ltd.

www.scican.com