

Bravo Upgrade Kit Installation Instructions

Bravo Door Motor Replacement Instructions

Old Motor

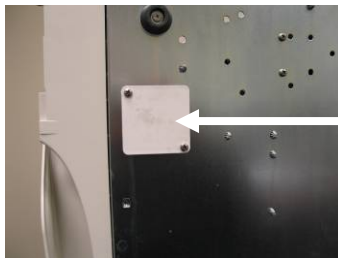


New Motor



Remove covers

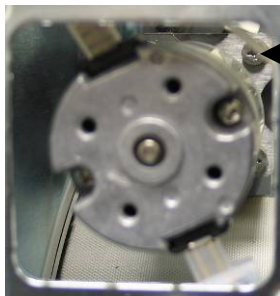
Drain clean water & waste water reservoirs and turn Bravo on to it's side or slide Bravo over the edge of a counter. Remove the plate on the bottom of the Bravo below the door motor.



Door Motor cover plate

Disconnect the white and black wires to the motor. This is a DC motor so the white wire must be connected to the terminal with the red dot.

Insert a Phillips screwdriver with a shaft length of at least 5.5 inches through the opening where the cover plate was removed and remove 4 screws holding the motor assembly. Retain top coupling to reinstall with new motor.



Screw



Top Coupling

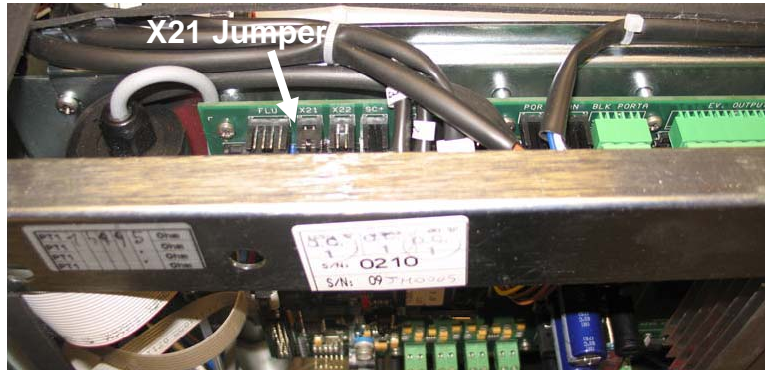
Remove the old motor through the opening in the bottom of the Bravo and install the new motor and coupling retained when old motor was removed. Reconnect the white and black wires making sure the white wire is connected to the terminal with the red dot.

When the Bravo is powered ON you will usually get a locking problem error code. Reset the new door motor using the attached instructions.

Bravo Door Motor Reset for Gam PCB

Remove the cover

Remove the X21 jumper located above the battery



Push on the hidden key while turning the power switch ON

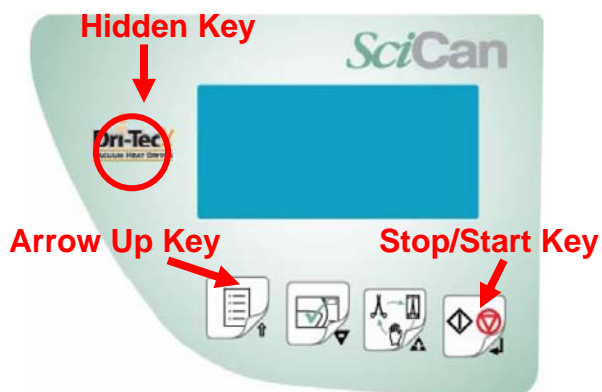
The message "Locking Device" will be displayed on the LCD

Release the hidden key and press the stop/start key to release the door locking mechanism

Open the door and press the arrow up key to exit this condition and start the self test

Switch off the Bravo at the end of the self test and reinstall jumper X21

Switch the Bravo ON and run a sterilization cycle



Door Motor Reset for Troll PCB

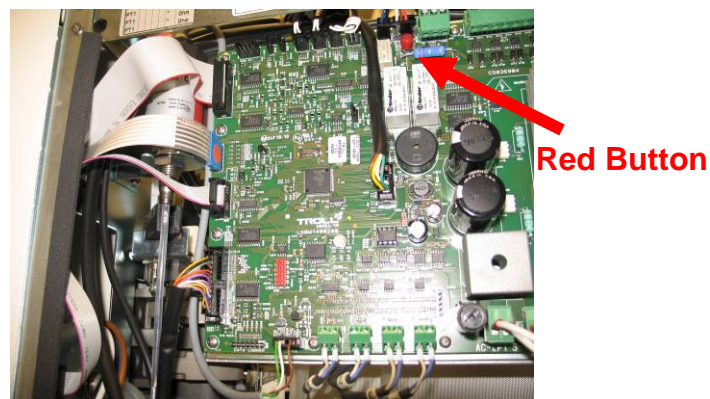
Push on the hidden key while turning the power switch ON

The message "Locking Device" will be displayed on the LCD

Release the hidden key and press the stop/start key to release the door locking mechanism

Open the door and press the arrow up key to exit this condition and start the self test

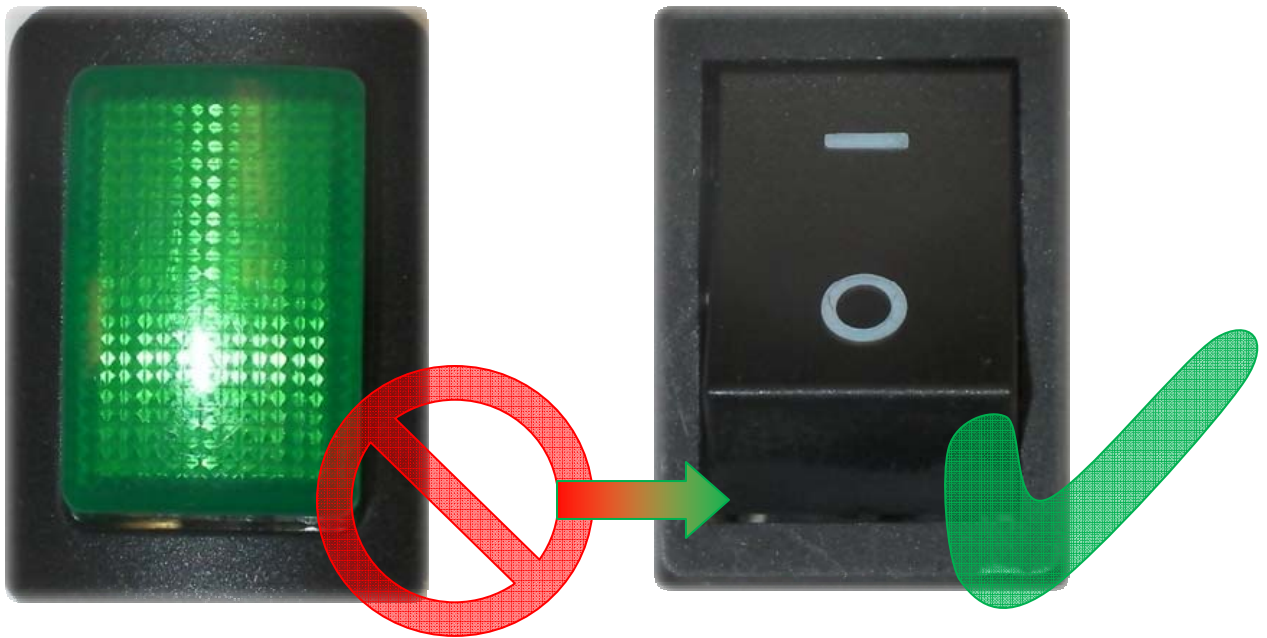
If the door overload function has been triggered, there is no more beeping sound when pressing the keypad remove the cover and reset the red button on the PCB.



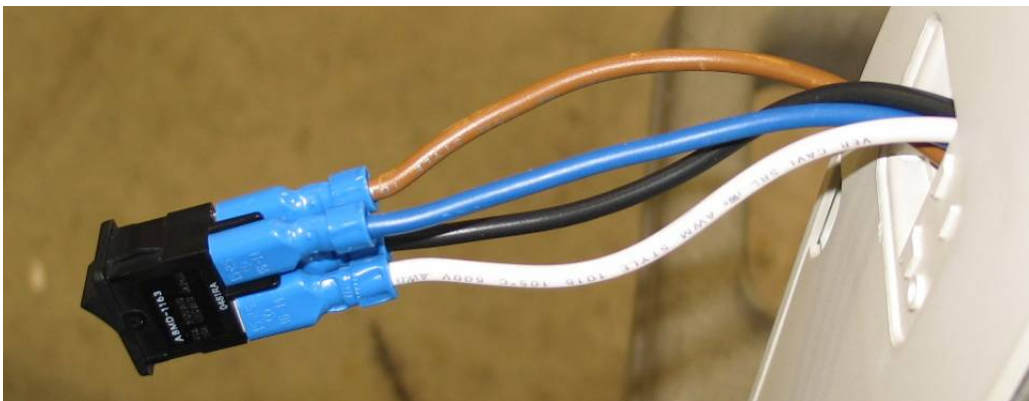
Bravo Power Switch Replacement Instructions

Old Power Switch

New Power Switch

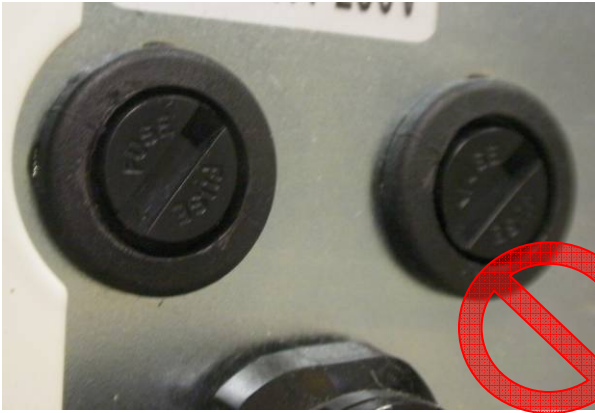


When replacing the power switch connect the wires from the fuse holders to the top terminals of the switch and connect the wires to the filter board to the bottom terminals of the switch. White or blue wires (neutral wires) should be on one side of the switch and black or brown wires (positive wires) on the other side of the switch. The wires can be brought through the mounting hole for the switch and connected to the switch. Then push the switch into the mounting hole and lock into place.



Bravo Fuse Holder Replacement

Old Fuse Holder



New Fuse Holder



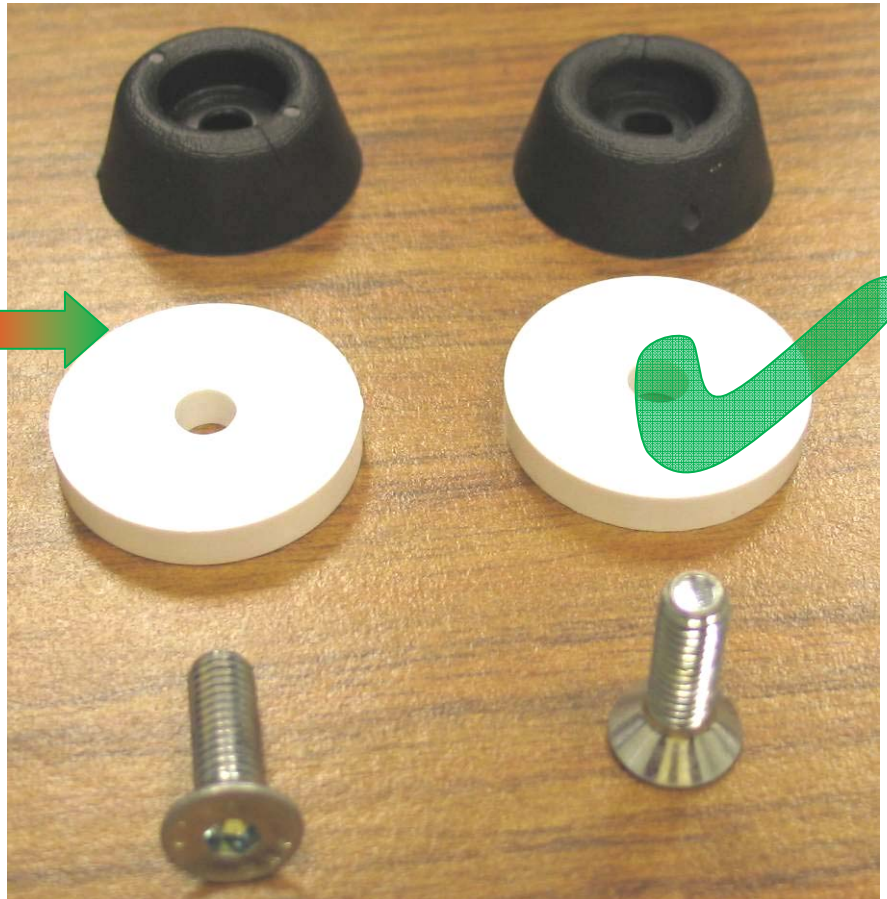
When replacing fuse holders connect white & blue wires to one fuse holder and black and brown wires to the other fuse holder.

Bravo Rear Leg Replacement

Old Leg



New Leg



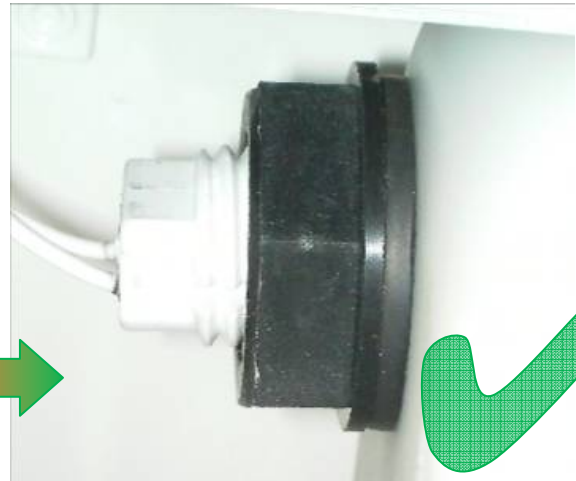
Note: Requires 9/16 Allen Wrench

Bravo Float Switch Replacement Instructions

Old Float Switch (orange gasket)



New Float Switch (black gasket)



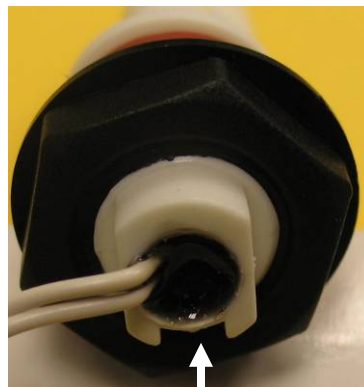
Remove cover

Drain clean water & waste water reservoirs

When replacing more than one float switch always complete installation of the first switch before removing the second switch so the wiring plugs do not get connected to the wrong terminals.

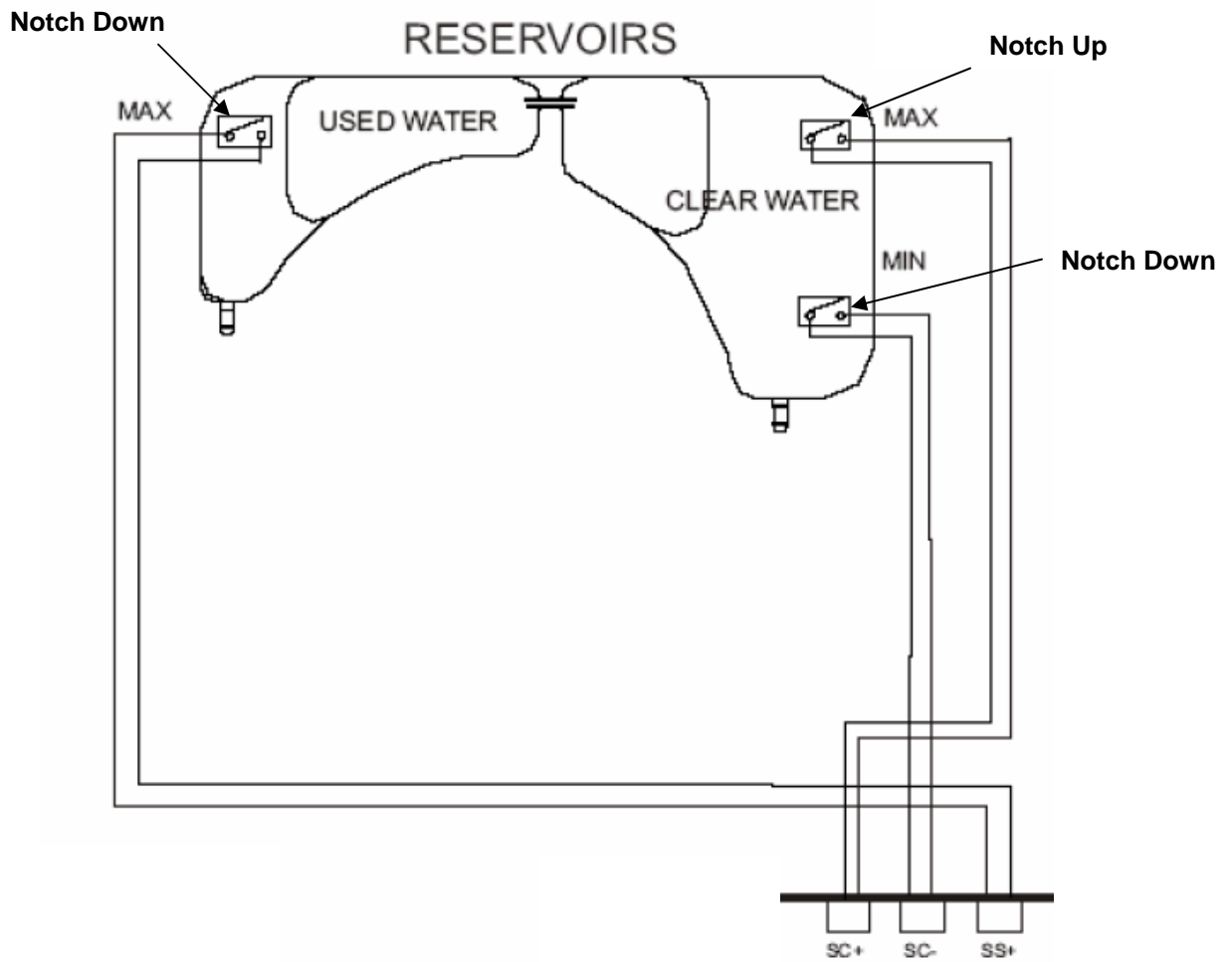
The float switch for the waste water tank (part # 97668046) will have a longer wire than the clean water reservoir float switches (part #97668045).

When install the float switch always observe the direction of the notch on the rear of the switch. The waste water tank switch the notch goes down, the clean water reservoir lower switch (water level minimum) the notch goes down and the clean water reservoir upper switch (water level maximum) the notch goes up.



Notch

The float switch wires connect to the top of the PCB on the left. The waste water tank switch connects to terminal SS+, The clean water reservoir lower switch (minimum level) connects to terminal SC- and the clean water reservoir upper switch (maximum level) connects to terminal SC+.

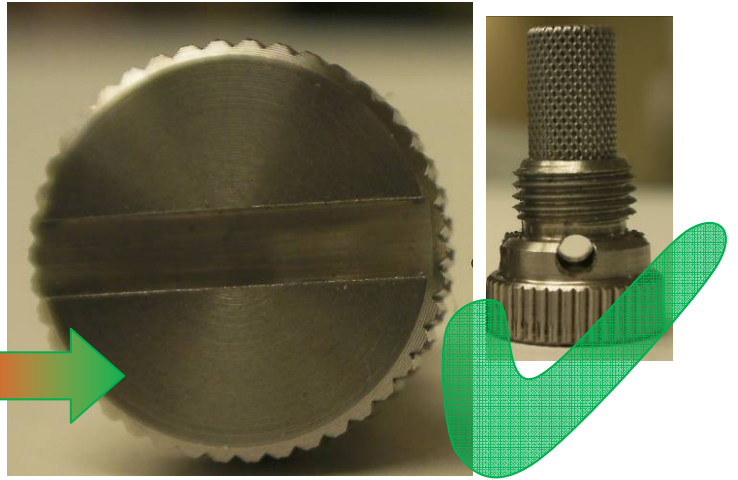


Chamber Filter Fitting Replacement

Old Chamber Filter Fitting



New Chamber Filter Fitting



Tubing Replacement

Old Tubing



New Tubing



Replace tubing from water pump to steam generator and tubing from steam generator to chamber.

