

Hydrim® C51w Installation Instructions

Tools and supplies required to install the Hydrim:

- Slot screwdriver
- Channellocks

Ensure that Hydrim Cleaning Solution (instrument wash chemical) is available. All other supplies are included with the Hydrim unit.

Specifications

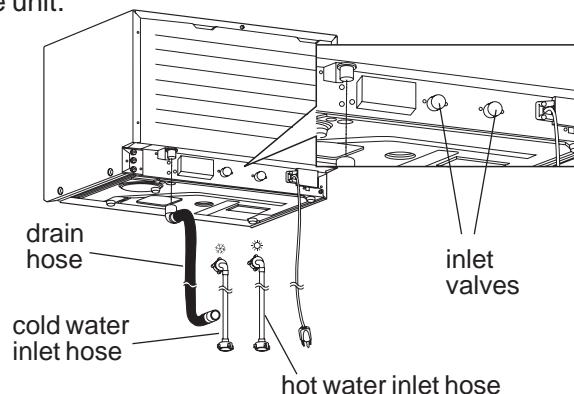
	North America	Europe
Voltage:	208 - 240 V	220 - 240
Frequency:	60 Hz	50 Hz
Rated load:	2 kW	2 kW
Circuit breaker:	10 A per phase	10 A per phase
Dimensions / Mass:		
Height:	475 mm / 18.75"	
Width:	600 mm / 23.75"	
Depth:	460 mm / 18.25"	
Depth with door open:	780 mm / 30.75"	
Weight:	34 kg / 75 lbs	
Running Noise:	60 dBA	

Utility Hook-ups

Hose / Cord	Length / Diameter	Max. Distance from inlet / drain	Water Pressure (optimal)*	Shut-off valve
Hot inlet	1.9 m / 6.2 ft. 2 cm / 3/4"	1.5 m / 5 ft.	1-10 bar / 14.5-145 psi	Yes
Cold inlet	1.9 m / 6.2 ft. 2 cm / 3/4"	1.5 m / 5 ft.	1-10 bar / 14.5-145 psi	Yes
Drain	1.5 m / 5 ft. 2 cm / 3/4"	—	—	—
Electrical	1.8 m / 6 ft. AWG 18-3	—	—	—

* unit will function with water pressure down to 0.5 bar / 7 psi.

NOTE: If this unit is being installed in a location with 240V power supply and the hot water temperature is less than 50°C / 122°F, please attach the enclosed label to the front of the unit.



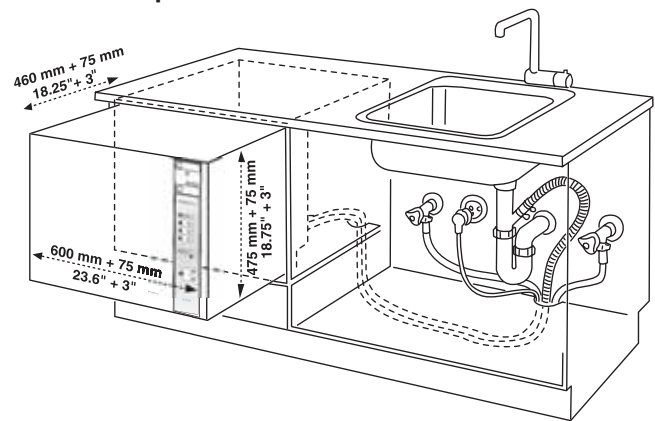
The electrical outlet should not be located directly behind the unit and should be accessible. The power cord must be routed away from the back panel and hot water inlet hose.

Proposed Installation Configurations:

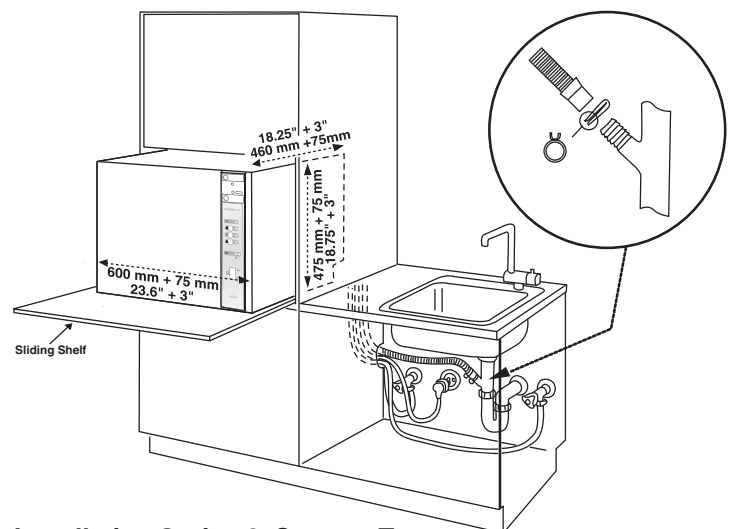
If the Hydrim is installed in a Sterilization Center, the manufacturer of the Sterilization Center should allow a 3" (75 mm) space at the top and sides of the Hydrim. This will facilitate installation, leveling, and service access to the Hydrim.

The cabinetry will need to be vented and allow the air exhaust from the dryer to escape. At least 3" / 75mm of space should be provided behind the rear panel. Do not move the Hydrim into place by maneuvering the open wash chamber door. This may cause the door to become misaligned and leak.

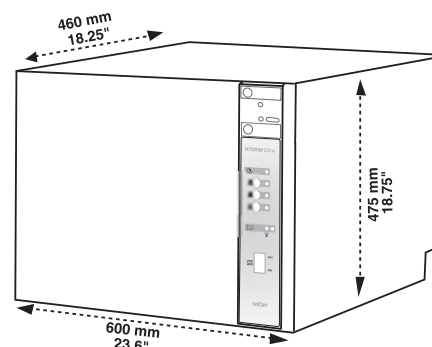
Installation Option 1. Cabinet / Steri Center



Installation Option 2. Sliding Shelf



Installation Option 3. Counter Top



Connecting the water inlet hoses:

Connect the hot water hose (red) to the hot inlet valve on the Hydrim (indicated by a red dot) and the cold water hose (blue) to the cold water inlet valve on the Hydrim (indicated by a blue dot).

The connector with the elbow should be attached to the back of the Hydrim unit. The washer with the screen goes to the water supply connector. Make sure that the inlet valves are free of debris.

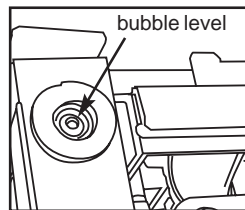
Drain requirements:

Connect the drain hose to the drain outlet. The drain hose can be attached to existing drain lines using a 3.5 cm / 1.5" or larger standpipe / P-trap combination. If the hose is connected directly to the drain line, fittings and adapters should not reduce water flow. The drain hose should be attached to the main drain at a point no more than 1 metre / 3 ft. above the base of the Hydrim. A floor drain is acceptable (check local codes).

Leveling the Hydrim:

For the unit to function properly, it will need to be correctly leveled. To level the unit, follow these steps:

1. Adjust the legs underneath the unit.
2. Use the leveling bubble on the top right hand side as a guide.
3. When the bubble is in the center, the unit is correctly leveled.



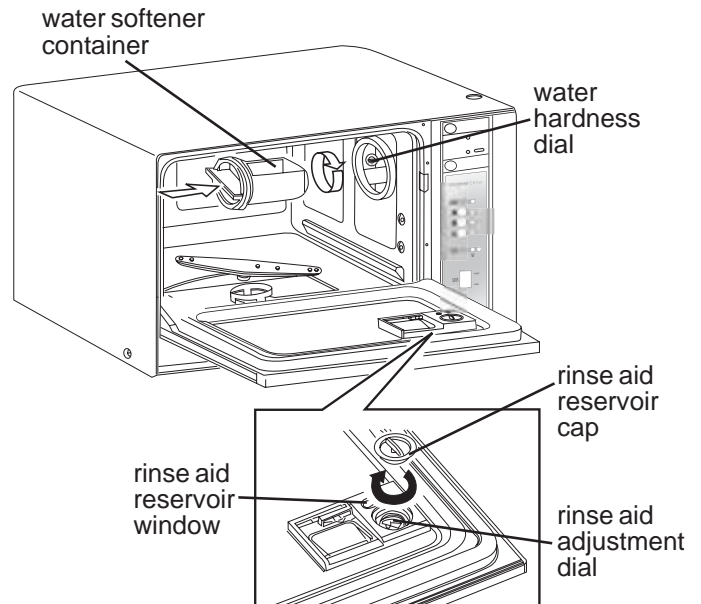
Testing water hardness and setting the water softener (salt):

Hydrim is equipped with a built-in water softening system which needs to be adjusted according to the local water hardness. The Hydrim water test kit includes 3 water hardness test strips in bags. Take a water sample from the location where the machine will be installed. Open one of the bags and remove the test strip. Dip the strip in the water. Compare the color of the strip with the chart on the back of the bag. Determine the water hardness according to the chart on the water test kit envelope. Adjust the water hardness dial accordingly.

Hardness – ppm	Hydrim C51 setting
0 - 110	0
120 - 360	1
370 - 510	2
520 - 890*	3
> 890	Additional water treatment required

* consider using an additional water treatment

Pour 0.5 litre / 16 oz. of water into the water softener by pouring it into the salt container and inserting it into the chamber wall. Add 0.5 kg / 1.1 lbs. of water softening salt in the same manner. Screw the salt container tightly into the wall of the chamber.

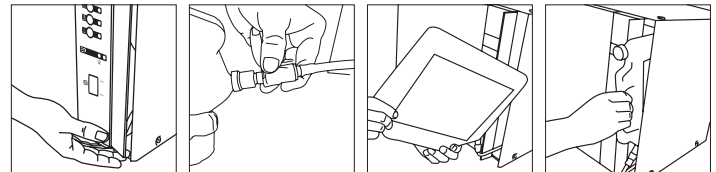


Filling the rinse aid:

Add Stat-Dri Plus to the rinse-aid reservoir until the indicator is dark (reservoir holds 60 ml / 2 oz).

Installation Test:

Install the Hydrim Cleaning Solution bottle.



Turn on the shut-off valves. Run a test cycle, checking for leaks.

Additional Information:

- The Hydrim unit is heavy (34 kg / 75 lbs). Exercise caution when moving it.
- The Hydrim must be properly grounded.
- The Hydrim is equipped with an air gap / anti-suction device to prevent backflow of dirty water into the water supply. No other air gap device is necessary.
- If you need to extend the water inlet and drain hoses, ensure that you use commercial grade plumbing hose. The maximum length of the drain hose is 13 ft. / 3.3 m.

SciCan

For all service and repair inquiries:

United States: 1-800-572-1211, Canada: 1-800-870-7777, International: +49-(0) 821 - 278 93400

Email: techservice.ca@scican.com

Hydrim is a registered trademark of SciCan, Division of Lux & Zwingerberger Ltd.