

Hydrim® C51w Quick Reference Guide

For best results:

Always use the heavy duty cycle for cassettes, hinged instruments, heavily soiled instruments and the cannula post adapter.

Do not allow instruments to dry for more than one hour prior to processing in the Hydrim.

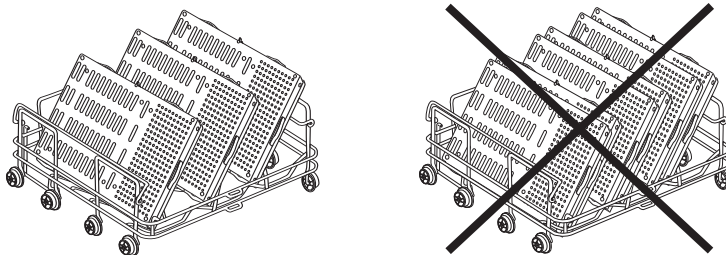
Remove all cement, composite material and amalgam at chairside prior to processing in the Hydrim.

Do not overload cassettes or baskets with instruments. (Follow the manufacturer's guidelines.)

Place hinged instruments in baskets, not cassettes.

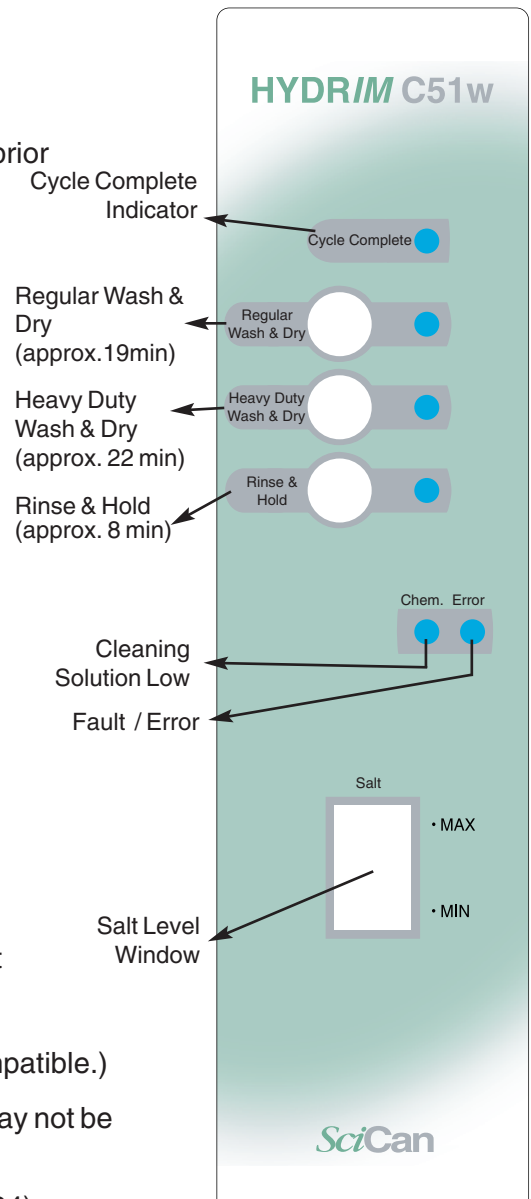
Do not use any detergent or cleaning agent other than HIP Hydrim Cleaning Solution. It is not necessary to soak instruments or cassettes in other detergents prior to placing in the Hydrim.

Place cassettes as indicated, to ensure that fluid fully contacts instruments and cassettes.



Caution:

1. HIP Cleaning Solution (Hydrim Cleaning Solution with Instrument Protection) has been carefully formulated to provide outstanding material compatibility with a wide range of metals and coatings. (Some manufacturers' instruments may not be compatible.)
2. Plastic objects that are not resistant to hot water (65°C / 149°F) may not be suitable.
3. When processing small objects, use the hinged basket (01-108294). Failure to do so will result in small objects being thrown out of the baskets, which may cause damage to the machine.

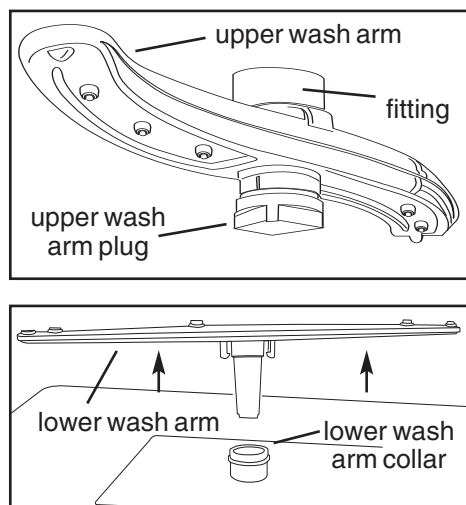
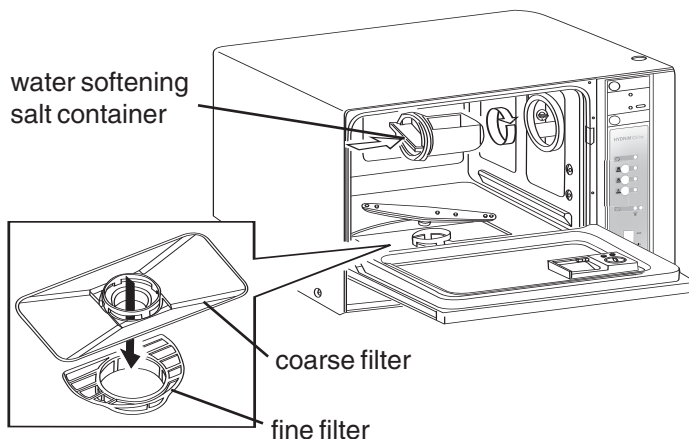


Cycle	Rinse and Hold	Regular Wash	Heavy Duty Wash
Description	Use to prevent soil from drying on instruments and if wash cycle is not immediately desired.	Use for moderately soiled loose instruments.	Use for heavily soiled instruments or cassettes or the cannula post.
Temperature (wash)	35°C / 95°F	50°C / 122°F	50°C / 122°F
Wash / Rinse Time (min.)	8 min.	19 min.	22 min.
Water Consumption	6 litres / 1.59 gallons	17 litres / 4.5 gallons	17 litres / 4.5 gallons

Filter Maintenance:

Inspect the coarse and fine filters **daily** for debris and clean if necessary.

1. Grasp the handle in the center of the coarse filter and turn it 90° counter-clockwise. (To reinsert the coarse filter, turn the handle clockwise.)
2. Remove the coarse filter.
3. Remove the fine filter.
4. Clean both filters by rinsing them in tap water.
5. Re-assemble, ensuring that the filters are locked in place.



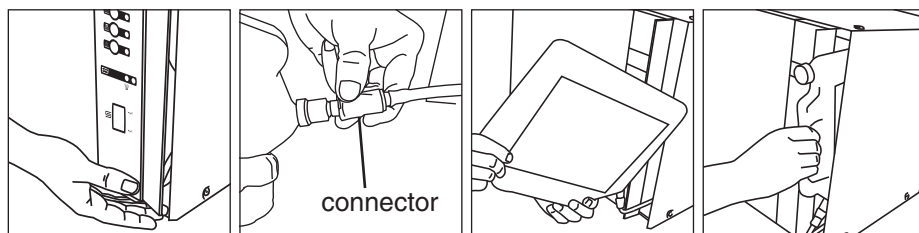
Wash Arm Maintenance:

Inspect the wash arms **weekly** for debris and clean if necessary.

1. Open the unit door and remove the wash rack from the unit.
2. Hold the fitting and unscrew the upper wash arm plug.
3. Remove the upper wash arm.
4. Using two hands, grasp both ends of the lower wash arm on the underside.
5. Pull the lower wash arm upwards.
6. Inspect both sides of the wash arms for debris in the nozzles. Remove the debris where necessary.
7. Rinse both wash arms with tap water.
8. Reassemble the wash arms.

Replacing the Hydrim Cleaning Solution:

When the “cleaning solution low” light is flashing, the Hydrim Cleaning Solution bottle needs to be replaced. Disconnect the old bottle and recycle or discard it. Ensure that the connector is clean and free of residue. Install a new bottle, as shown:



Refilling the Water Softener

Periodically inspect the salt level window. If empty, refill as follows:

1. Fill the water softening salt container with water softening salt.
2. Screw the container back into position.

SciCan

For all service and repair inquiries:

United States: 1-800-572-1211, International: 49-(0) 821 - 278 93400, Canada: 1-800-870-7777

Email: techservice.ca@scican.com

Hydrim is a registered trademark of SciCan, Division of Lux & Zwingenberger Ltd.