

4. Installation Instructions

To open the wash chamber door, pull the ring inside the chemical door.

Tools and supplies required for installation:

- Slot screwdriver
- Channellocks

Ensure that HIP Cleaning Solution (instrument wash chemical) is available. All other supplies are included with the Hydrim unit.

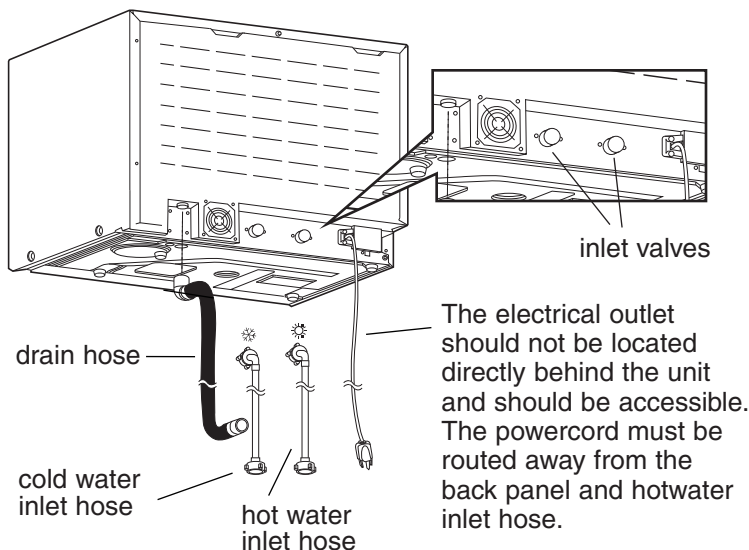
Specifications:

North America Voltage and Frequency: 208-240V, 60 Hz	Height: 475 mm/18.75"
International Voltage and Frequency: 220-240 V, 50 Hz	Width: 600 mm/23.75"
Rated load: 2 kW	Depth: 460 mm/18.25"
Circuit breaker: 10 A per phase	Depth with door open: 780 mm/30.75"
	Weight: 34 kg/75 lbs
	Running Noise: 60 dBA

Utility Hook-ups

Hose / Cord	Length / Diameter	Max. Distance from inlet / drain	Water Pressure (optimal)*	Shut-off valve
Hot inlet	1.9 m / 6.2 ft. 3/4"	1.5 m / 5 ft.	1-10 bar 14.5 - 145 psi	Yes
Cold Inlet	1.9 m / 6.2 ft. 3/4"	1.5 m / 5 ft.	1-10 bar 14.5 - 145 psi	Yes
Drain	1.5 m / 5 ft. 3/4"	—	—	—
Electrical	1.8 m / 6 ft. AWG 18-3	—	—	—

* unit will function with water pressure down to 0.5 bar/ 7 psi.



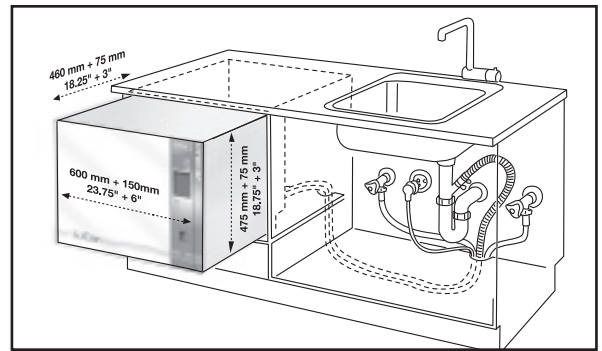
Installation Configurations:

If the Hydrim is installed in a Sterilization Center, the manufacturer of the Sterilization Center should allow a 75 mm/3" space at the top, back and both sides of the Hydrim. This will facilitate installation, leveling, and service access to the Hydrim.

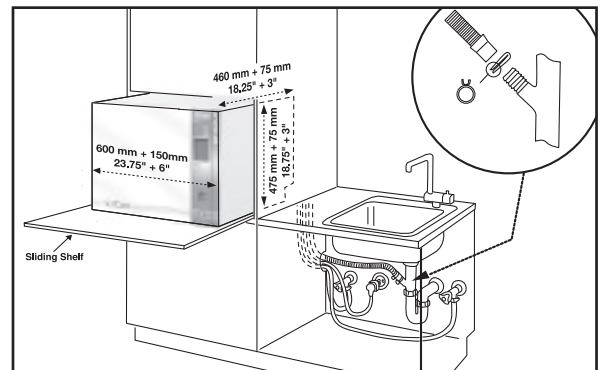
The cabinetry will need to be vented and allow the air exhaust from the dryer to escape. At least 75mm/3" of space should be provided behind the rear panel.

Do not move the Hydrim into place by maneuvering the open wash chamber door. This may cause the door to become misaligned and leak.

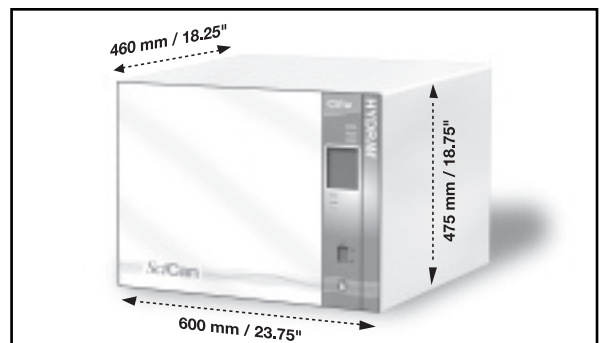
Option 1. Cabinet / Sterilization Center



Option 2. Sliding Shelf



Option 3. Counter Top



4. Installation Instructions

Connecting the water inlet hoses:

Connect the hot water hose (red) to the hot inlet valve on the Hydrim (indicated by a red dot) and the cold water hose (blue) to the cold water inlet valve on the Hydrim (indicated by a blue dot).

The connector with the elbow should be attached to the back of the Hydrim unit. The washer with the screen goes to the water supply connector. Make sure that the inlet valves are free of debris.

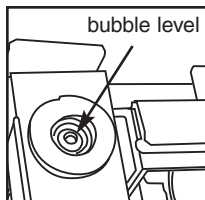
Drain requirements:

Connect the drain hose to the drain outlet. The drain hose can be attached to existing drain lines using a 3.5 cm/1.5" or larger standpipe / P-trap combination. If the hose is connected directly to the drain line, fittings and adapters should not reduce water flow. The drain hose should be attached to the main drain at a point no more than 1 metre above the base of the Hydrim. A floor drain is acceptable (check local codes).

Leveling the Hydrim:

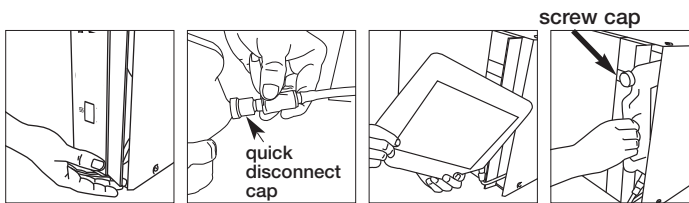
For the unit to function properly, it will need to be correctly leveled. To level the unit, follow these steps:

1. Adjust the legs underneath the unit.
2. Use the leveling bubble on the top right hand side as a guide.
3. When the bubble is in the center, the unit is correctly leveled.



Installing Cleaning Solution:

Ensure that the quick-connect cap on the HIP Cleaning Solution bottle is tight. Install the bottle and loosen the screw-cap slightly to prevent formation of a vacuum.



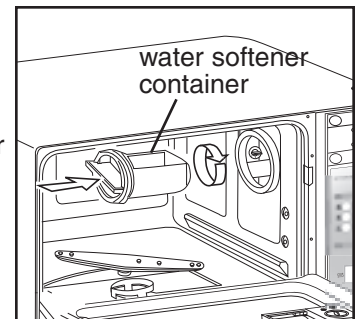
Testing water hardness and setting the water softener (salt):

Hydrim is equipped with a built-in water softening system which needs to be adjusted according to the local water hardness. The Hydrim water test kit includes three water hardness test strips in bags. Take a water sample from the location where the machine will be installed. Open one of the bags and remove the test strip. Dip the strip in the water. Compare the color of the strip with the chart on the back of the bag. Determine the water hardness according to the chart on the water test kit envelope. Power the unit on. Touch the "i" in the lower right hand corner of the screen. Select "Setup" and then "Set Regeneration". Using the up and down arrows, set the water softener regeneration level according to this table:

Hardness – ppm	Hydrim setting
0 - 180	0
190 - 400	1
410 - 540	2
550 - 890*	3
> 890	Additional water treatment required

* consider using an additional water treatment

Pour 0.5 litre/1 quart of water into the water softener by pouring it into the salt container and inserting it into the chamber wall. Add 0.5 kg/1 lb. of water softening salt in the same manner. Screw the salt container tightly into the wall of the chamber.



Installation Test:

Turn on the shut-off valves. Run a test cycle, checking for leaks.

Additional Information:

- The Hydrim unit is heavy (34 kg/75 lbs.). Exercise caution when moving it.
- The Hydrim must be properly grounded.
- The Hydrim is equipped with an air gap / anti-suction device to prevent backflow of dirty water into the water supply. No other air gap device is necessary.
- If you need to extend the water inlet and drain hoses, ensure that you use commercial grade plumbing hose. The maximum length of the drain hose is 3.3 m/13 ft.