

3 Diagnostics and Troubleshooting

3.4 Using software tools for diagnostics

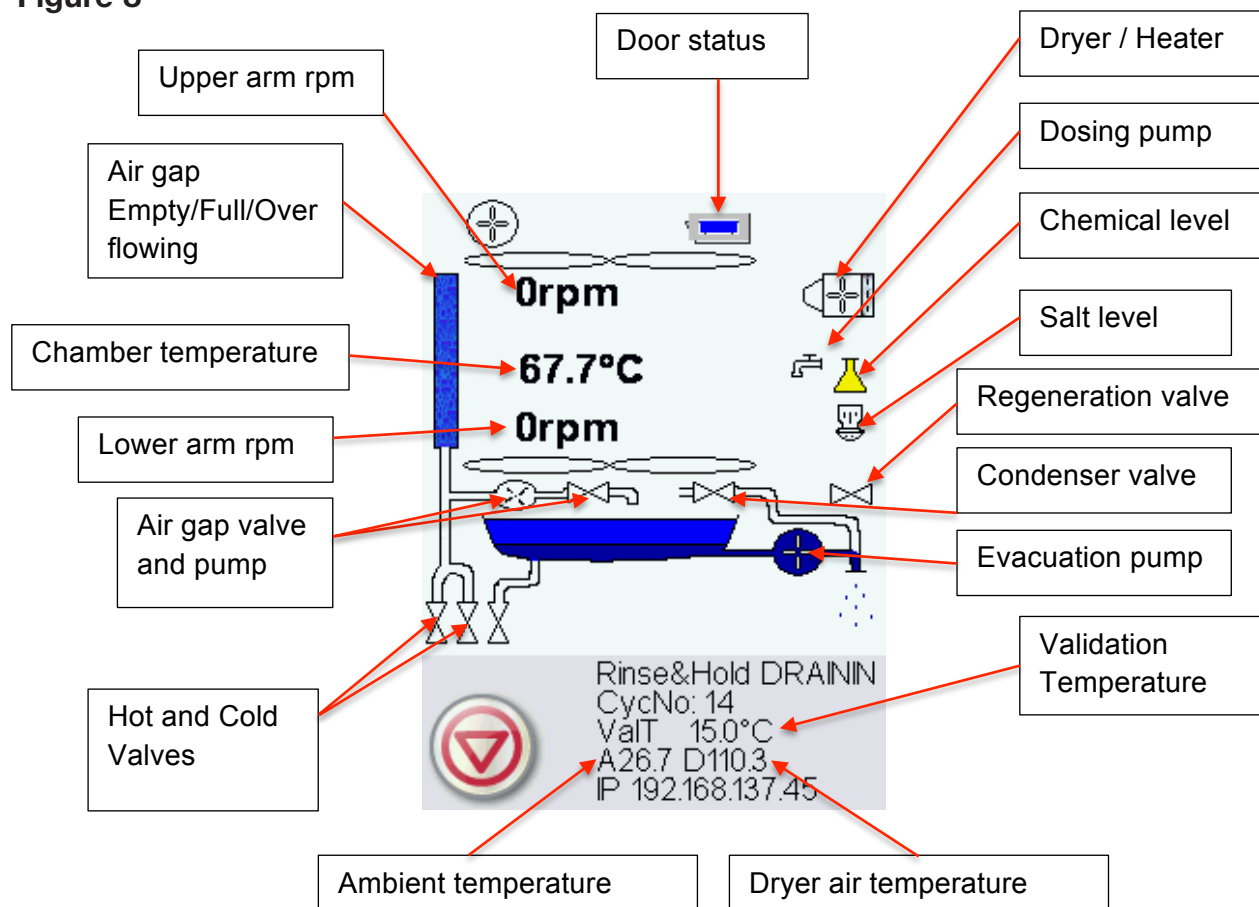
Within the service menu, there are two useful tools for troubleshooting: Debug screen and IO status screen.

Debug Screen

The Debug screen is used when running a cycle to view the I/O status of components.

To access the debug screen, select Diagnostic Tools from the service menu and select Set Debug Screen, then go to the main menu and select a cycle. The LCD screen will display the following:

Figure 8



NOTE: When a cycle is started (P1, P2, P3) the air gap is filled four times before the circulation pump starts.