

Hydrim C61 G4 LCD & LCD Controller Removing & Reinstalling LCD Assembly Part #01-113311S LCD Controller C61 Part #01-113391S

Removing & reinstalling LCD & LCD Controller

Remove door fascia to access LCD.

Remove all wire connections from the controller board and cut cable ties affixing the harness to the LCD. (Figure 19a)

Remove the retaining nuts on each corner of the board.

CAUTION: Lift the board gently – it is attached to the LCD by a ribbon cable. (Figure 19a)

Flip the board over to expose the ribbon cable latch fastener.

Using your fingernail, gently lift up the latch to release the ribbon cable. (Figure 19b)

The LCD is affixed to the bracket and replacement LCD will come attached to bracket.

Remove the speaker and fan if replacing the LCD so that these can be used on the replacement LCD bracket.

To reinstall:

Place the control board on a flat surface next to the LCD/LCD bracket and connect the ribbon cable.

Reattach the LCD control board using the 4 retaining nuts.

Reattach all the wire connections to the LCD control board and fasten the cable ties.

Reattach the LCD bracket to the door fascia using the 2 retaining nuts.

Reinstall the door fascia.

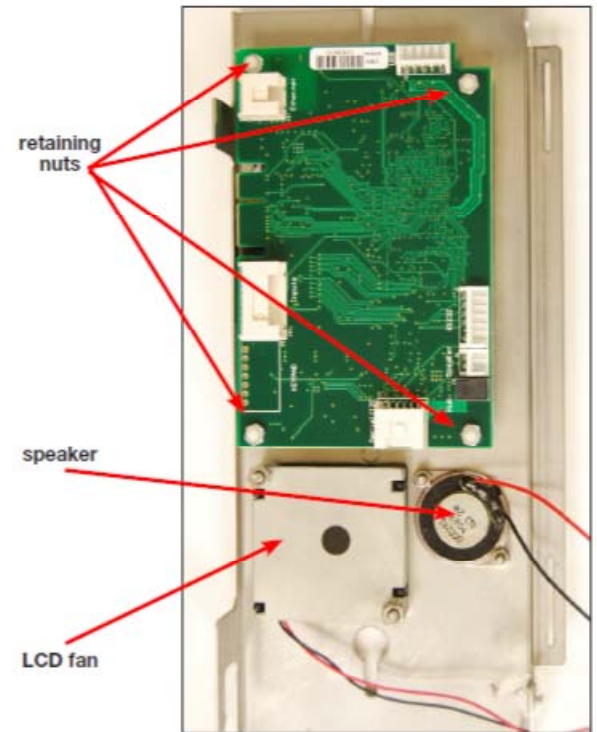


Figure 19a

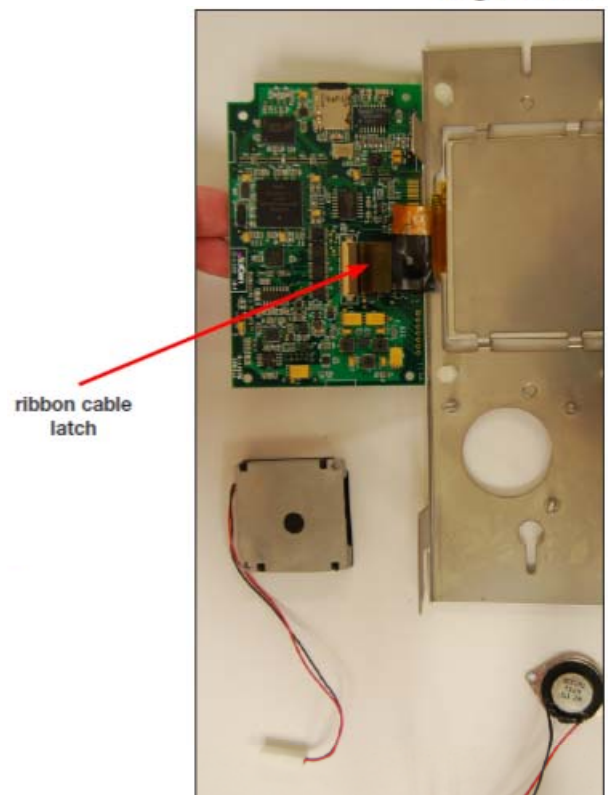


Figure 19b