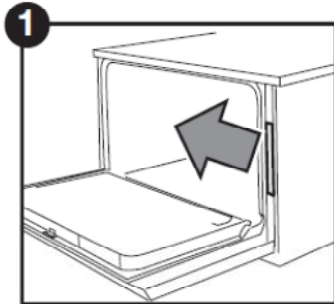


Hydrim C61 G4

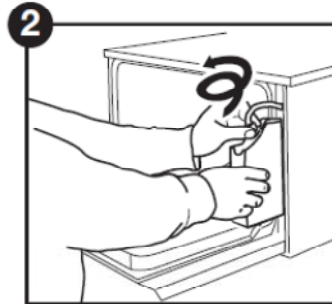
Routine Procedures and Maintenance

2.1 Replacing the HIP™ Ultra cleaning solution

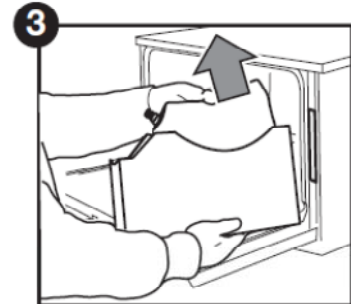
To replace the cleaning solution, follow these steps:



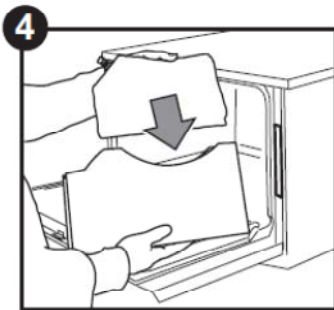
Turn the power OFF, open the door and pull out the chemical drawer.



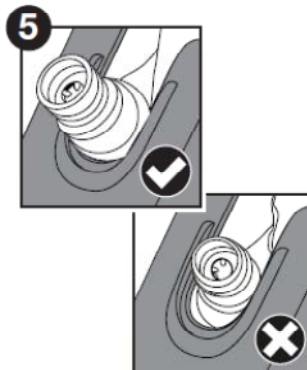
Disconnect the cleaning solution connector.



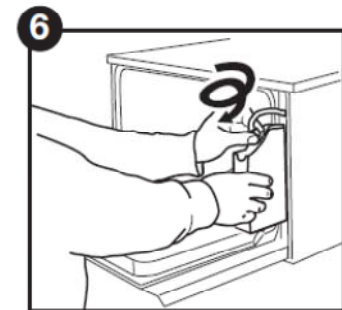
Remove the empty cleaning solution bag and discard or recycle it.



Place a new bag in the chemical drawer.

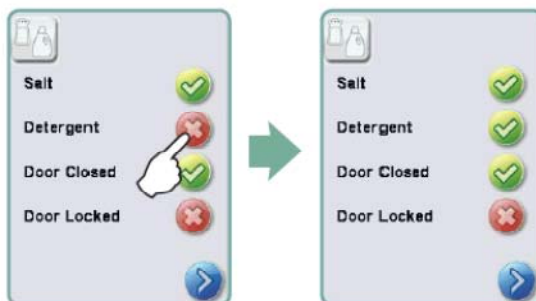


Ensure the nozzle is in the correct position.



Connect the new bag, close the door and power ON the unit.

To prime the cleaning solution dosing pump, press the water softener/detergent icon on the main screen. In the water softener/detergent screen, press the red X next to "Detergent". The unit will prime the dosing system and a green check mark will appear in place of the red X when it is ready for use.



NOTE: The system can also be primed by simply starting a cycle and selecting "Detergent Replaced", when prompted.

NOTE: A cycle will not start with the red X next to the "Detergent" indicator.

Replacing the HEPA Filter

When the message “Replace air filter” appears, the HEPA filter is in need of changing. To change the filter, proceed as follows:

1. Open the kickplate below the front door of the unit and turn the power off.
2. Remove the old filter by pulling it from the center.
3. Install the new air filter and close the kickplate.
4. After replacing the filter, go to the “Reset Drying Counter” screen in the Setup menu and reset the drying counter to zero.
5. The filter must be replaced every 750 drying cycles. The unit will continue to run if the filter is not replaced, but the drying performance will decrease. (Part number for HEPA filter is 01-113277S)



1.14 Resetting the drying counter

The drying counter must be reset when the HEPA filter is changed. User will be prompted every 750 cycles to do preventative maintenance, which is triggered by the reminder to change the HEPA filter. To reset the drying counter, follow these steps:

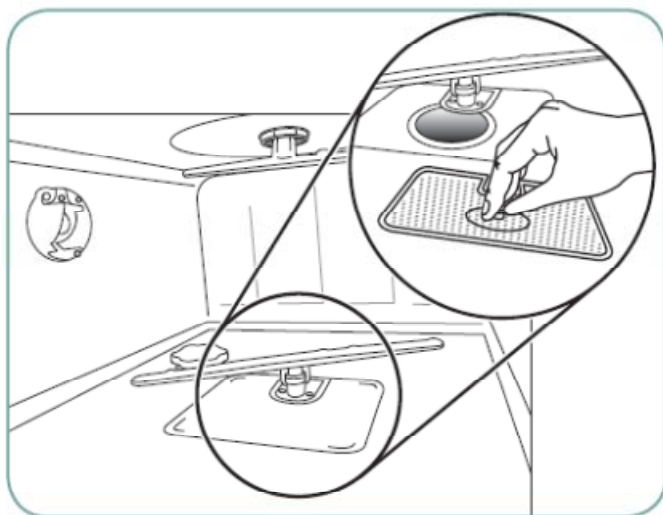


2. Scroll to **Reset Drying Counter** and select.

3. Select Default 0 to reset. This will stop the reminder to the end user.

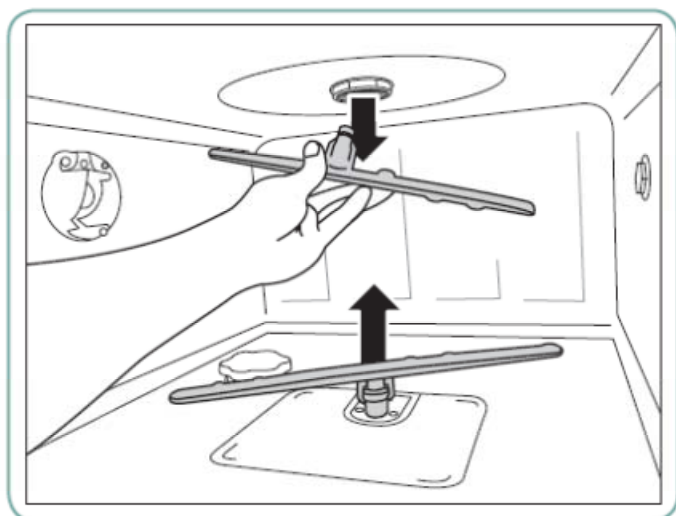
Filter and Wash Arm Maintenance

2.3 Filter and wash arm maintenance



Cleaning the chamber's coarse and fine filters

Inspect the coarse and fine filters in the bottom of the chamber daily for debris and clean if necessary. To clean, remove the filter (turn the metal nut at the centre front of the filter to release it), rinse under a tap and reassemble. Ensure that the filter is firmly locked into position when replaced.



Removing and checking the wash arms

If you see that the wash arms are not turning easily, remove them. Both the upper and lower arms are pressure mounted. To remove the upper arm, pull down and to remove the lower arm, pull up. Rinse under a tap, clear obstructions from outlet holes and reassemble.

2.4 Cleaning the chamber

The HYDRIM C61w G4 chamber can be cleaned using the "Cleaning" program in the User menu. This cycle is used to periodically remove hardwater deposits from the chamber walls and racks. Pour 0.5 litres of vinegar into the chamber before starting the cycle. From the User menu, select "Cleaning" and a cleaning cycle, similar to a normal wash cycle, will run. The user will be prompted to clean the chamber every 25 cycles. Reminder frequency can be changed to 25, 50, or 100 cycles. To do this, enter the Technician menu.